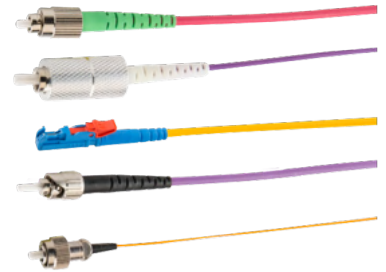


Multimode Cables

- Any combination of connectors, fibers, and cables
- Proprietary epoxy curing for surviving harsh environments
- Built in the USA with quality components
- ISO 9001 Certified
- 100% Testing
 - Insertion Loss
 - Return Loss
 - Endface Geometry
 - Polish Quality



Connectors

Connectors	E-2000	FC, QFC	LC	MU	SC	SMA	ST	1.25mm Ferrule	1.8mm Capillary	2.5mm Ferrule	3.2mm Ferrule
Polish	APC, UPC	APC, UPC, Angle Flat	APC, UPC	APC, UPC	APC, UPC	UPC	UPC	APC, UPC	APC, UPC	APC, UPC	APC, UPC
Type	Push/Pull	Screw on	Push/Pull	Push/Pull	Push/Pull	Screw on	Bayonet	Ceramic Stainless	Borosilicate	Ceramic Stainless Borosilicate	Ceramic Stainless

Fibers

Core/Cladding (um)	50	62.5	100	100	50	105	200	300	400	600	800	1000
	125	125	140	140	125	125	220	330	440	660	880	1050
Index	Graded	Graded	Graded	Step	Step							
Attenuation (dB/km)	2.3@850 0.6@1300	2.9@805 0.6@1300	4.0@850 1.5@1300	6.0@850 3.0@1310	Low OH: 15dB @ 400nm 1.0dB @ 1,000 to 1,800nm, 200 dB @ 2,200nm High OH: 300dB @ 250nm 1.0dB @ 400 to 900 and 1,000 to 1,100nm							
Numerical Aperture	0.20	0.275	0.29	0.29	0.12 0.22	0.15 0.22	0.22	0.37 Low OH Available				

Typical values

Cables

OD	900um	1.6mm	2mm	3mm	3.8mm	5mm	5.8mm	7mm
Jacket Material	Hytrek PVC, PVDF PTFE	PVC	PVC, PVDF Polyurethane	PVC, PVDF Polyurethane Stainless	Stainless	Stainless Plastic	Stainless w/ Silicone	Stainless
Strength Member	None	Kevlar						

Performance

Core Size	50 to 105	150 to 1000
Insertion Loss (dB)	<0.2 (0.05 Avail)*	<1.0*
Return Loss (dB)	APC≥60, UPC≥50*	-

*Insertion and return loss specifications do not apply to SMA connectors



Industries We Serve

At Impact Electronic Solutions, we offer cutting-edge prototype and full-turnkey production services, providing unparalleled innovation and seamless solutions to meet your needs.

Our expertise spans highly regulated and mission-critical environments. We deliver complex electronic, fiber optic, and electromechanical products with exceptional quality and reliability. From product development to full-scale manufacturing, we prioritize customer-centric solutions and support groundbreaking innovations.

With extensive experience, we ensure success across diverse industries by consistently meeting rigorous standards and exceeding expectations.

About Us

We are a dynamic team dedicated to delivering innovative electronic design and manufacturing services that consistently outperform industry standards.

Our headquarters are in the Pacific Northwest, and the Impact ES network spans five key locations across the U.S.:

- Clearwater, Florida
- Cranston, Rhode Island
- Grants Pass, Oregon
- Vancouver, Washington
- Ventura, California

Our facilities have been recognized for excellence by numerous corporations, organizations, and publications, showcasing our commitment to quality, precision, and customer satisfaction nationwide.

Fiber Optic Cables and Assemblies Certifications



NASA 8739.5

Contact Us

sales@impactelectronics.com
805-644-5051
www.impactelectronics.com

